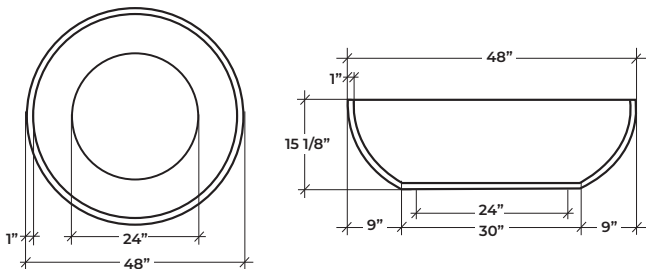
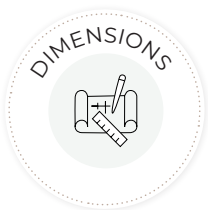


# Zen 48

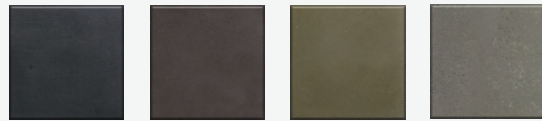
## MODERN RELAXATION

Relax around this minimalist firebowl. This fire pit is the perfect addition to modern landscapes creating an instant intimate gathering space. The clean modern curve of this low profile fire bowl offers a timeless appeal to any outdoor design.



### Product Features/ Specifications:

- 65K BTU to 240K BTU
- Liquid Propane or Natural Gas
- Complimentary Lava Rocks
- Other media available for purchase
- Manual Lit Ignition (Pilot or Electronic Ignition (please contact for further information)
- Weight: 253 lbs.
- Combustible clearance: no overhead combustibles or 84" (depends on burner system) and 36" horizontally.



CHARCOAL

CHOCOLATE

PORTOBELLO

HAZE



LONDON FOG

MIST

MOONLIGHT

CHALK

### Min. and Max. Gas Inlet Pressures:

The installer is responsible for using the correct fuel lines and/or regulation to provide gas to the fire feature within the specified minimum and maximum gas inlet pressures.

### Gas Inlet Pressures

Match Light	Minimum	Maximum
Natural Gas	3.5" W.C. (.8718Kpa)	7.0" W.C. (1.7436Kpa)
Liquid Propane	11.0" W.C. (2.7399 Kpa)	13.0" W.C. (3.2381 Kpa)

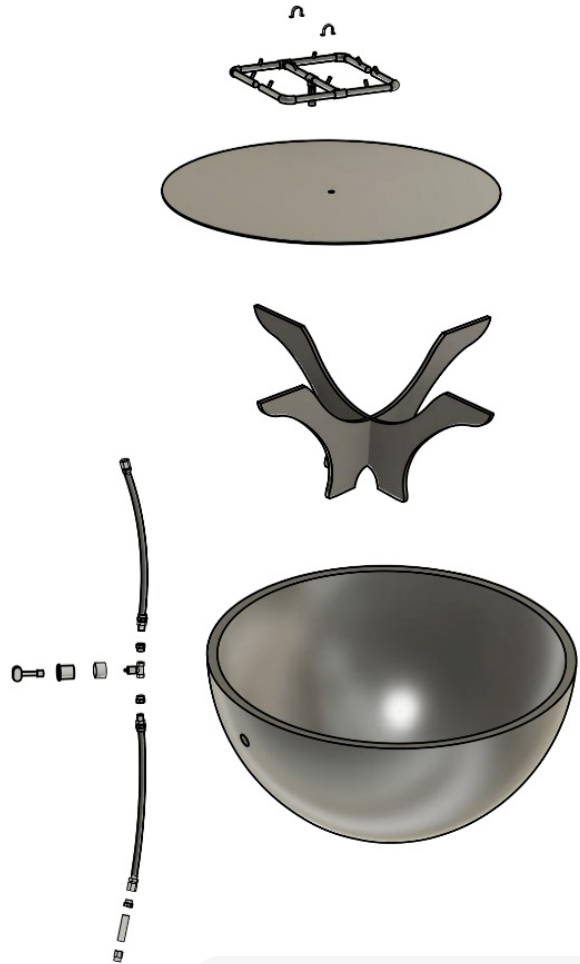
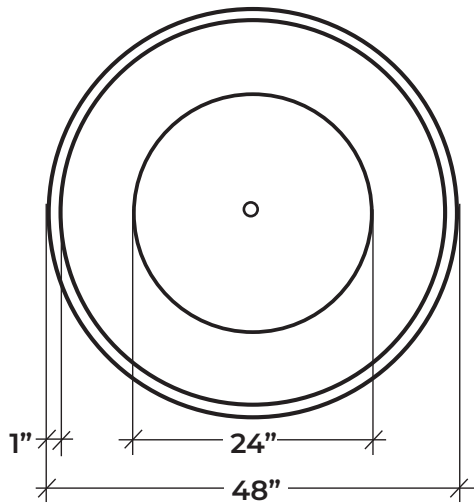
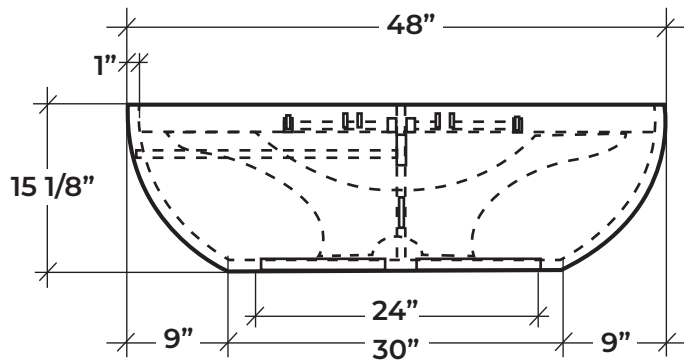


**DreamCast**  
Design & Production

Please contact us at **1-604-278-4939** with any questions. We also encourage you to explore our website at [www.dreamcastdesign.com](http://www.dreamcastdesign.com)

Our experienced team can assist you with product information, installation and design recommendations.

# Zen 48



The bold Zen 48 fire bowl is the centerpiece for any occasion. The effortless profile and stunning flame offers instant spectacle and warmth. This is the firepit to suit both modern or classic outdoor spaces.

**DreamCast**  
Design & Production

Please contact us at **1-604-278-4939** with any questions. We also encourage you to explore our website at **[www.dreamcastdesign.com](http://www.dreamcastdesign.com)**

Our experienced team can assist you with product information, installation and design recommendations.