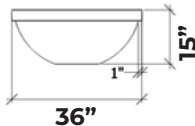
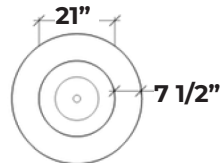
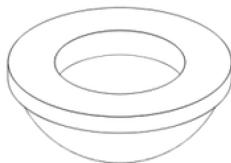
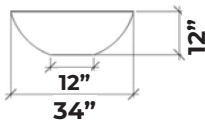
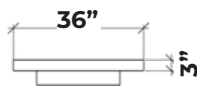
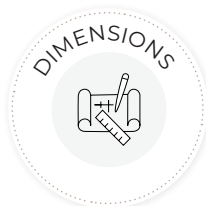


DreamCast Aura 36



Min. and Max. Gas Inlet Pressures:

The installer is responsible for using the correct fuel lines and/or regulation to provide gas to the fire feature within the specified minimum and maximum gas inlet pressures.

Refer to installation manual for further information

DreamCast
Design & Production

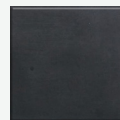
Please contact us at **1-604-278-4939**
with any questions.
We also encourage you to explore our
website at www.dreamcastdesign.com

PASSION FOR PERFECTION

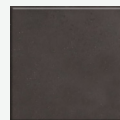
Warm up your days with this versatile aura fire bowl. Complete with an 8" rim for greater functionality this stunning fire bowl adds warmth and ambience to any outdoor space.

Product Features/Specifications:

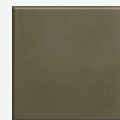
- 55K BTU Natural Gas
- 50K BTU Propane Gas
- Complimentary Lava Rocks
- Other media available for purchase
- Manual Lit Ignition (available for upgrade to Electronic Ignition - please contact for further information)
- Weight: 264 lbs.
- Overhead clearance: 84" - 120" (depending on burner) and 36" horizontally to combustibles.



CHARCOAL



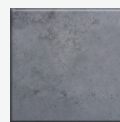
CHOCOLATE



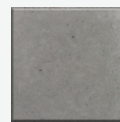
PORTOBELLO



HAZE



LONDON FOG



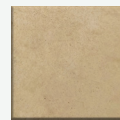
MIST



MOONLIGHT



CHALK



CAPPUCCINO



MOCHA

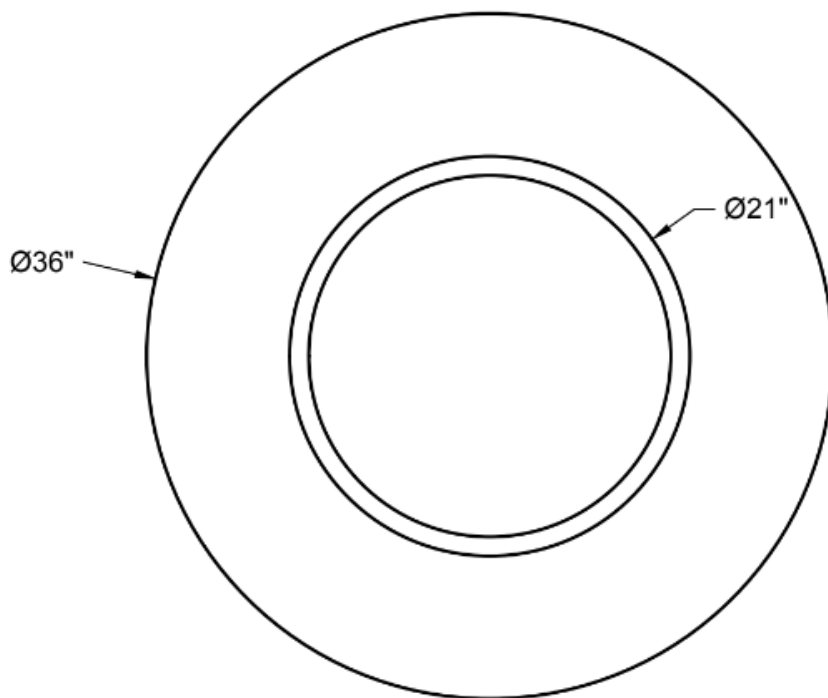
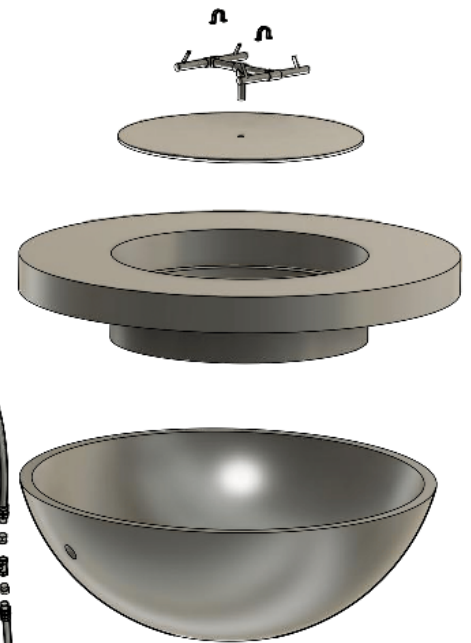
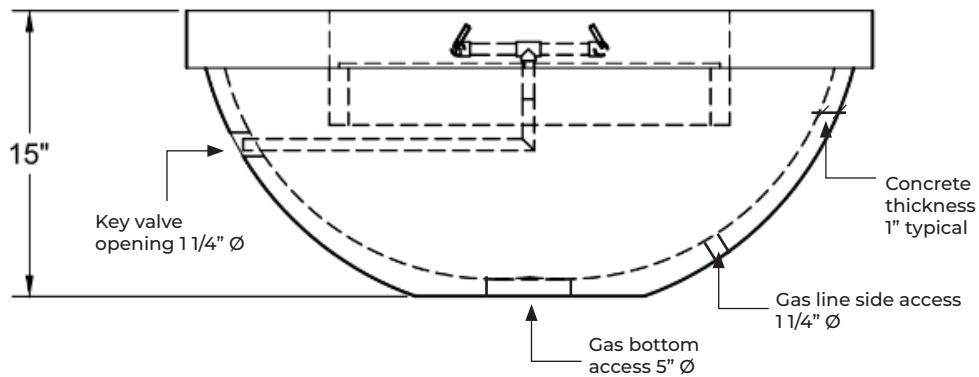
Gas Inlet Pressures

Match Light	Minimum	Maximum
Natural Gas	3.5" W.C. (.8718Kpa)	7.0" W.C. (1.7436Kpa)
Liquid Propane	11.0" W.C. (2.7399 Kpa)	13.0" W.C. (3.2381 Kpa)



Our experienced team can
assist you with product
information, installation and
design recommendations.

Aura



Warm up your days with this versatile aura fire bowl. Complete with an 8" rim for greater functionality this stunning fire bowl adds warmth and ambience to any outdoor space. Warm up your days with this versatile aura fire bowl. Complete with an 8" rim for greater functionality this stunning fire bowl adds warmth and ambience to any outdoor space.

DreamCast
Design & Production

Please contact us at **1-604-278-4939** with any questions. We also encourage you to explore our website at **www.dreamcastdesign.com**

Our experienced team can assist you with product information, installation and design recommendations.