

Passion for Perfection

The AUSTIN mantel is a modern masterpiece characterized by its bold, striking lines that embody a distinct contemporary style. Enhance your space with its sleek design, ideal for those who crave a cutting-edge aesthetic.

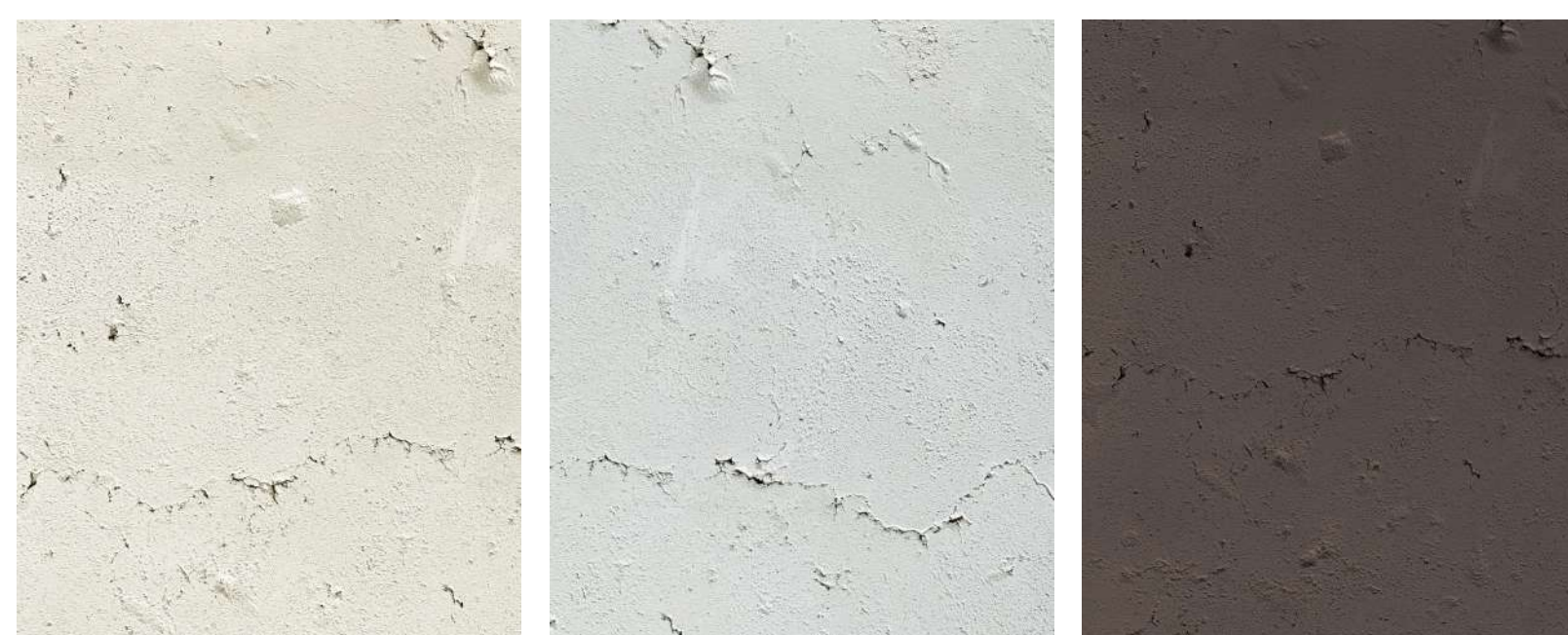


FEATURES

- Non-combustible concrete
- Compatible with most wood burning
- Paintable stone texture
- Dimensions: 72"W x 54"H

TRAVERTINE

Drawing inspiration from classical Roman aesthetics, this unique and complex texture imbues our FOUNDATION collection with rustic depth and beauty reminiscent of ancient splendour.



WHITE WISP

GREY CLOUD

GRAPHITE SKY