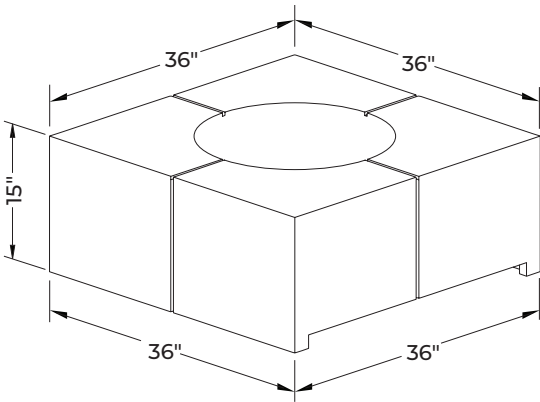


Bloq

INDUSTRIAL PROFILE

The Bloq Fire Pit's bold, geometric form and smooth concrete finish create a striking focal point that anchors any outdoor space. Its modern, minimalist design invites connection and warmth, turning every gathering into a memorable experience.

Weight 198 lbs.




Dimensions
36" x 36" x 15"



TECHNICAL DATA

	Manual	Push Button	Electronic Ignition
Standard System (ETL Certified System)	65K BTU NG 49K BTU LP	—	60K BTU NG/LP
Low-Clearance system (CSA/UL Approved Burner assembly)	65K BTU NG/LP	65K BTU NG/LP	90K BTU NG/LP

 For technical information, view the manual
www.dreamcastdesign.com

DreamCast
Design & Production



Please contact us at 1-888-616-4939 with any questions,
or email us at info@dreamcastdesign.com

All units ship with either NG/LP burner, lava rock topping and water resistant cover.

TOPPING OPTIONS



RIVER STONES



TUMBLER ROCKS



LOG SETS

EI ACCESSORIES



TIMER



REMOTE



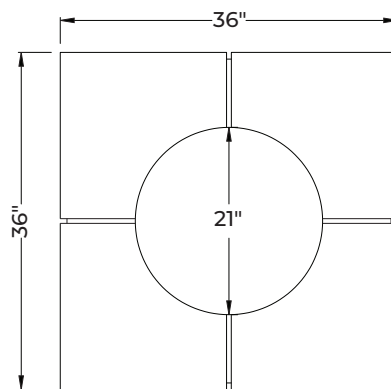
EMERGENCY
STOP

To explore more toppings & accessories, visit
www.dreamcastdesign.com

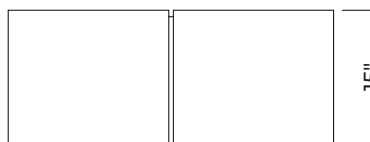
Min. and Max. Gas Inlet Pressures

The installer is responsible for using the correct fuel lines and/or regulation to provide gas to the fire feature within the specified minimum and maximum gas inlet pressures.

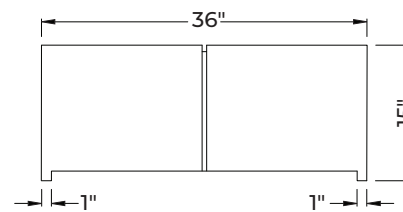
Refer to installation manual
for more details



PLAN



SIDE ELEVATION



FRONT ELEVATION

