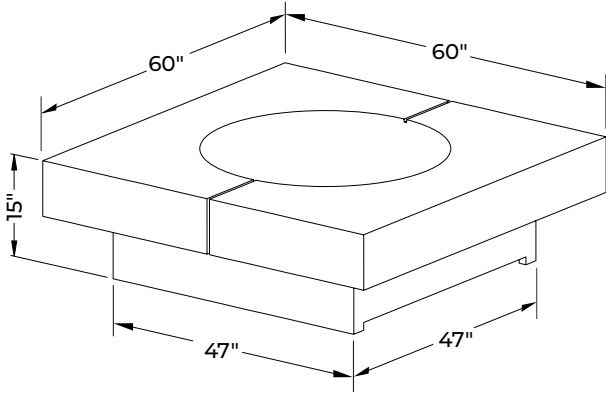


Element 60

BALANCED PRESENCE

The Element 60 brings balance and confidence to any outdoor space. Its symmetrical design creates a natural gathering point where every seat feels just right. Spacious, striking, and built to last, it's made to anchor patios, rooftops, and backyards alike.

Weight 374 lbs.



Dimensions
60" x 60" x 15"



TECHNICAL DATA

Standard System

(ICC Certified Burner assembly)

Manual

240K BTU NG/LP

Push Button

—

Electronic Ignition

420K BTU NG/LP

 For technical information, view the manual
www.dreamcastdesign.com

DreamCast
Design & Production



Please contact us at 1-888-616-4939 with any questions,
or email us at info@dreamcastdesign.com

Element 60

All units ship with either NG/LP burner, lava rock topping and water resistant cover.

TOPPING OPTIONS



RIVER STONES



TUMBLER ROCKS



LOG SETS

EI ACCESSORIES



TIMER

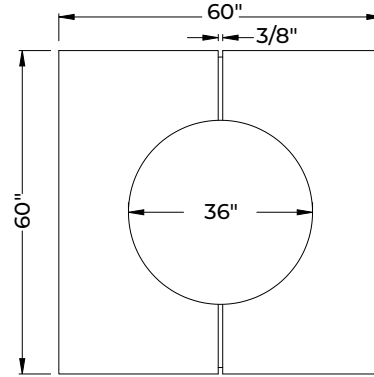


REMOTE

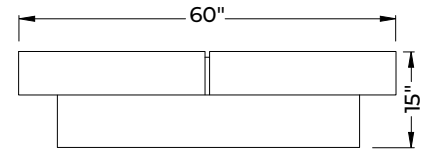


EMERGENCY STOP

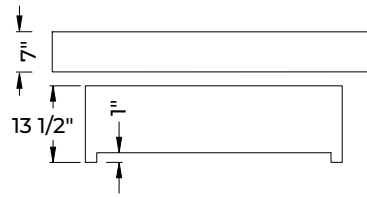
To explore more toppings & accessories, visit www.dreamcastdesign.com



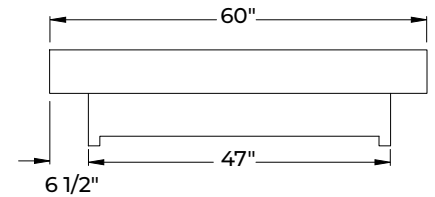
PLAN



FRONT ELEVATION



SIDE ELEVATION - TOP & BASE

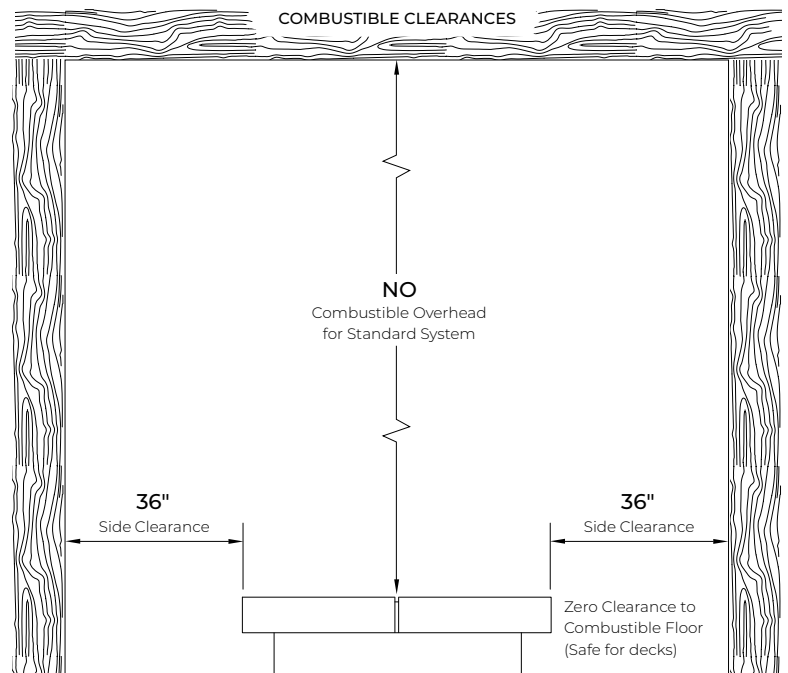


SIDE ELEVATION

Min. and Max. Gas Inlet Pressures

The installer is responsible for using the correct fuel lines and/or regulation to provide gas to the fire feature within the specified minimum and maximum gas inlet pressures.

Refer to installation manual for more details



Permanent structures on no more than two sides.

